

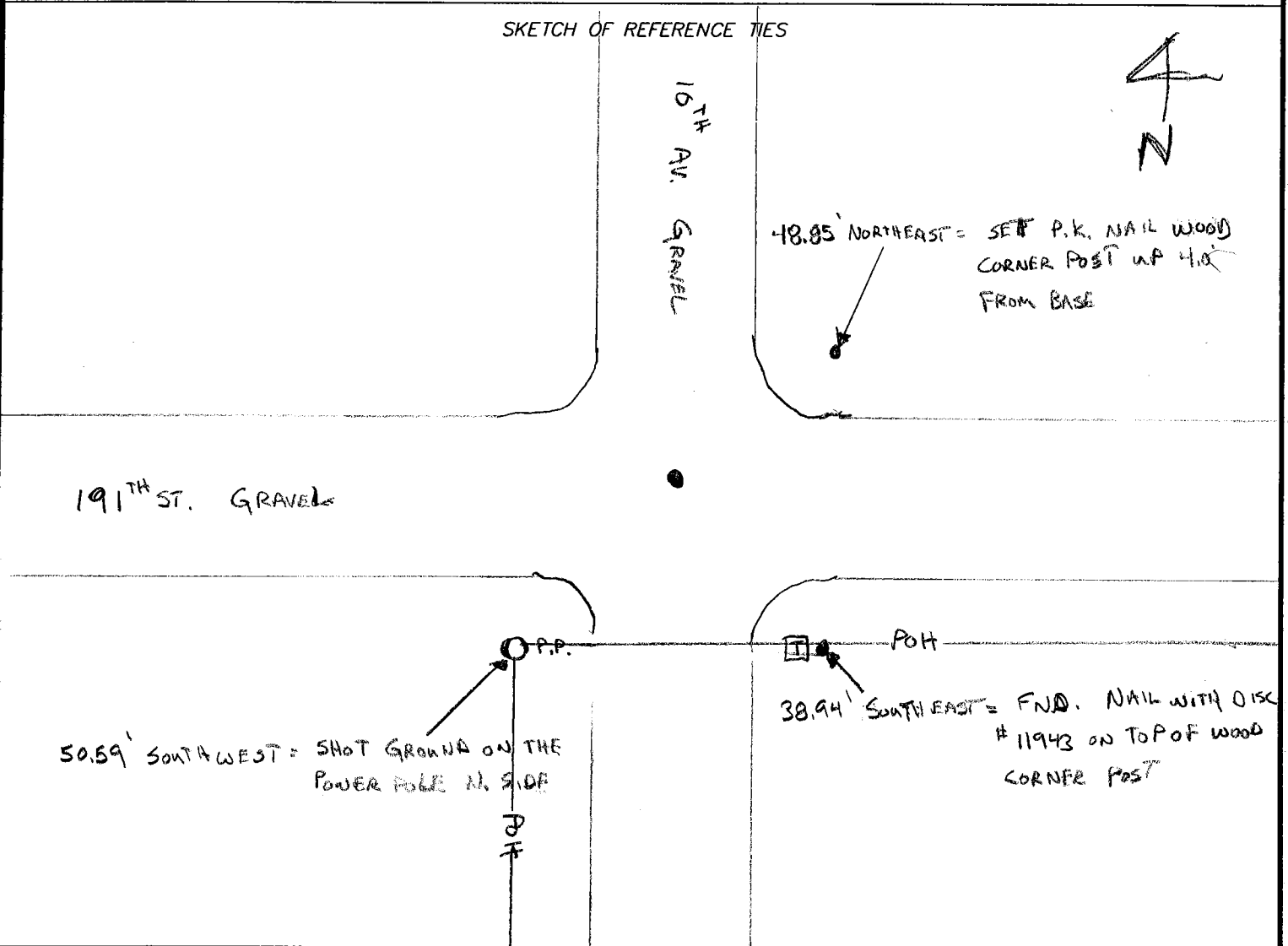
CERTIFICATE OF LOCATION OF GOVERNMENT CORNER

NORTHEAST Corner of Section 31, Township 108 N, Range 43 W, 5th P.M.
 STATE OF MINNESOTA, County of MURRAY

At the corner location shown on the sketch:

- On 7/5/07 found a 1/2" CAPPED IRON PIPE # 11943 DOWN 0.5' BELOW SURFACE
DATE
- left monument as found,
 lowered monument,
 removed monument (explain)
- On _____ placed a _____
DATE

SKETCH OF REFERENCE TIES



Statement of evidence relative to this corner location is on back of page.

I hereby certify that this document and the data contained herein was prepared by me or under my direct supervision.

[Signature]

Registration No. 40853

- Land Surveyor,
 Professional Engineer
 County Surveyor,
 County Engineer

OFFICE OF THE COUNTY RECORDER
 County of _____

I hereby certify that this document was filed in the Co. Recorders office at _____ M. on the _____ day of _____ A.D., 20____

County Recorder _____
 By _____, Deputy
 DOCUMENT NO. _____